

# DigiDelivery

# DigiDelivery

The New Standard in Secure Global Electronic File Exchange

## SERVERS

### SERV|GT

- Gigabit Ethernet
- 500 GB Internal Drive
- Unlimited Pending Deliveries
- Unlimited Standard Accounts

### SERV|LT

- Gigabit Ethernet
- 80 GB Internal Drive
- 20 Pending Deliveries
- Single Standard Account

a public FTP site or burning a DVD. Lossless compression (optional) reduces the size of the files to be exchanged by as much as 50%, resulting in faster upload and download times while ensuring a totally bit-accurate copy on delivery. In the case of a lost connection, DigiDelivery re-establishes contact and picks up the transfer from where it left off rather than starting over again, as an FTP process would.

### REPORTING & BILLING

DigiDelivery offers comprehensive reporting and billing functions to provide clear confirmation of every delivery and to make it easy to bill clients. Using a standard web browser, you can view all deliveries sent and received during the past 180 days and even request daily email reports. Track deliveries by client, project, account, and workorder number; flag deliveries for billing; sort by any criteria and export tab-delimited reports for use in Microsoft Excel or other accounting software.

### ACCOUNT SECURITY

To prevent the unauthorized abuse so common with FTP servers, DigiDelivery offers "guest" accounts that can exchange files with only your trusted "standard" account holders. That means you can exchange files with anyone in the world without having to worry that someone is using your system to distribute files to people you don't know. The SERV|LT supports one standard account, so all incoming deliveries are sent to a

single email account. The SERV|GT offers unlimited standard accounts, so each of your trusted users can receive delivery notifications directly via their own email accounts.

### SERVER-TO-SERVER RELAY

If both sender and recipient have DigiDelivery servers, they can use Server-to-Server relay to further accelerate the delivery process, extending deadlines and reducing turnaround time. With Server-to-Server relay, deliveries are automatically transferred from the sender's DigiDelivery server to the recipient's, without the recipient having to first initiate the download. For example, a project that needs to be delivered to another facility by the next morning can be transferred late at night and be ready for a rapid download when the recipient arrives.

### SYSTEM REQUIREMENTS

A Pro Tools system is not required.

DigiDelivery has specific network requirements. Visit [www.digidelivery.net](http://www.digidelivery.net) for complete details before purchasing a DigiDelivery system.

Deliveries may be sent or received with Mac OS 9-, Mac OS X-, Windows XP-, or Windows 2000-based workstations.

DigiDelivery is based on RocketServer™ and RocketDelivery® technology.



## BENEFITS

- Exchange any kind of electronic files, of virtually any size, with anyone in the world
- As easy to use as email
- Faster, more secure, and more reliable than FTP
- Less expensive than overnight delivery services

## FEATURES

- Dedicated Ethernet server appliance ensures high performance
- 128-bit encryption security
- Automatic email notification and one-click downloads
- Comprehensive reporting for confirmation and billing
- Setup Wizard ensures easy installation
- Pro Tools sessions automatically include all media
- Two models available to fit your needs
- No per-use fees, monthly charges, or custom modifications required

The Digidesign® DigiDelivery™ file exchange system makes it easy to exchange even gigabytes of digital assets securely and efficiently across the Internet. Send files by dragging them onto the DigiDelivery icon on your desktop and entering the email address of each recipient. Receive downloads simply by clicking a secure link — there's no need to enter IP addresses, user-names, or passwords. Each and every digital parcel is protected by the same heavy-duty encryption used by banks and government agencies, and dedicated, custom-built hardware guarantees reliability. DigiDelivery eliminates service fees, while automated reporting makes it easy to bill customers. Best of all, DigiDelivery does not require clients or contractors to have special hardware or network connections to use the system, so you can exchange files with anyone in the world.

### THE CORNERSTONE OF COLLABORATION

DigiDelivery offers a choice of two rock-solid network appliances, both of which ship preconfigured for easy installation. The Digidesign SERV|LT™ server appliance suits small-to-medium-sized facilities, storing twenty pending deliveries (up to 80 GB total). The Digidesign SERV|GT™ appliance provides higher data throughput and can store an unlimited number of deliveries (up to 500 GB total), making this the choice for major facilities that can't afford to miss a beat.

No matter which server you choose, the DigiDelivery system provides a wealth of advantages compared with standard delivery systems:

### EASE OF USE

DigiDelivery offers unparalleled security without sacrificing ease of use. Anyone with a basic understanding of computers can configure a DigiDelivery server using the Setup Wizard. Once the system is configured, the simple client utility makes the process of creating and sending a delivery — of any size — as easy as sending email. To send, simply drag and drop files onto the DigiDelivery icon and enter each recipient's email address.

As soon as a delivery is posted, an email is automatically sent to each recipient. The email contains the delivery details, a message from the sender, a link to download the client if necessary, and an encrypted key, which the recipient simply clicks to securely download the delivery. (For extra security, senders can transmit the key verbally instead of by email.) No user names, passwords, or IP addresses are needed. Once the recipient successfully downloads the delivery, the sender receives a confirmation email.

While DigiDelivery is optimal for any kind of digital asset transfer, Digidesign Pro Tools® system users enjoy an extra advantage: When you add a Pro Tools session file to your delivery, DigiDelivery automatically finds and includes all related audio, video, and plug-in settings files. There's no need to worry about missing files, time-consuming consolidations, or storage-consuming copies.

Additionally, the DigiDelivery server is self-cleaning. Once deliveries have been successfully downloaded by all recipients, the deliveries are automatically deleted from the server. With DigiDelivery, you no longer have worry about tying up disk space with unnecessary files.

### SECURITY

Protecting digital assets during any type of transfer is crucial. With DigiDelivery, all files are encrypted on the client before posting, and only the recipients of the secure keys can download and decrypt them. As a result, your media is always safe — even if the server appliance is stolen. And unlike FTP sites, senders and recipients never see the contents of the DigiDelivery server, so there's no fear of someone getting the wrong files or seeing other clients' projects. Because recipients do not need to have accounts on your server to receive assets, you save administration time and reduce the risk that login information will be improperly distributed.

### SPEED & RELIABILITY

DigiDelivery's design includes several features to ensure maximum efficiency and stability. Proprietary communication protocols accelerate the transmission of data between server and client. An owner of a DigiDelivery system can upload and download files at LAN speeds, freeing up the workstation much more quickly than posting to

*continued on back page*



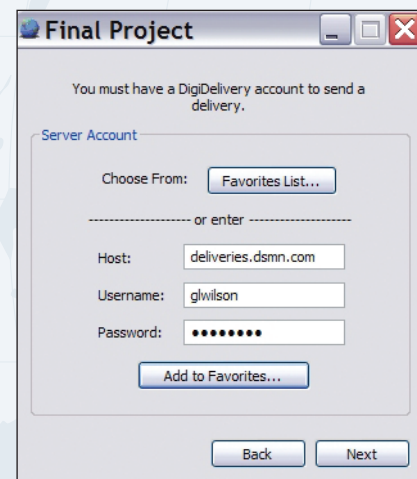
© 2005. Digidesign, DigiDelivery, Pro Tools, RocketDelivery, RocketServer, SERV|GT, and SERV|LT are trademarks or registered trademarks of Avid Technology, Inc., or its subsidiaries or divisions. All other trademarks contained herein are the property of their respective owners. All features and specifications subject to change without notice.

U.S.A. 1.800.333.2137 or 1.650.731.6300	United Kingdom 44.1753.655999	Iberia 34.93.2311658	Pacific (Australia) 61.3.5428.7780
www.digidesign.com	France 33.1.41.49.40.10	Nordic 46.8.556.379.00	Latin America 52.55.2615.1959
www.avid.com	Germany 49.811.55.20.555	Benelux 31.73.625.0093	
	Italy 39.02.5778971	Asia (Japan) 81.3.3505.7963	A division of <b>Avid</b>

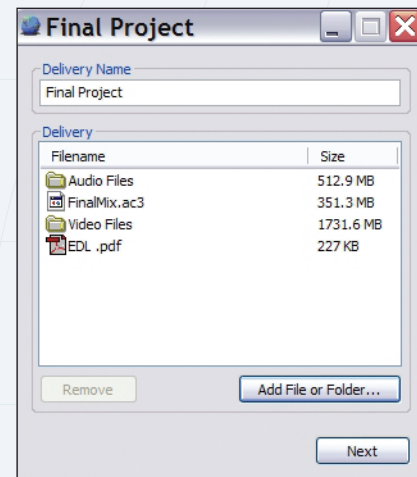
# HOW DOES DIGIDELIVERY WORK?

DigiDelivery allows you to exchange any kind of electronic file, of virtually any size, with anyone in the world. All you need is an account on a DigiDelivery server appliance and the simple utility software that you can download at [www.digidelivery.net](http://www.digidelivery.net).

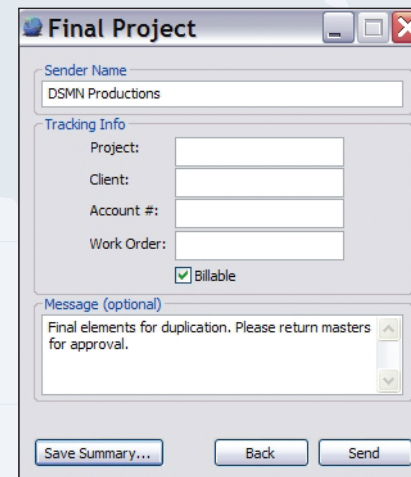
> 1 To make a DigiDelivery, the sender logs into his or her account on a DigiDelivery server. This server can belong to the sender, the recipient, or someone else entirely. Unlike other delivery systems, DigiDelivery does not require both sender and recipient to have matching hardware or to subscribe to the same network. Anyone can exchange files as long as the sender has an account on a DigiDelivery appliance.



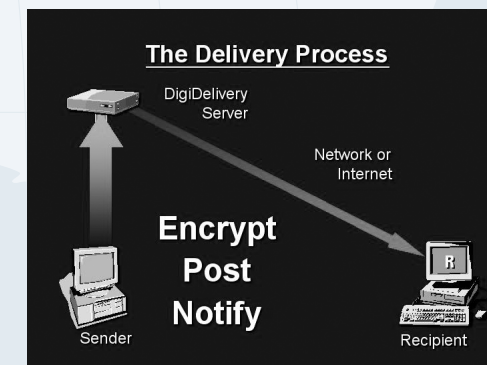
> 2 Once the sender has logged in, he or she simply drags and drops the desired files onto the DigiDelivery icon or Send Wizard, then enters email addresses for up to 100 recipients.



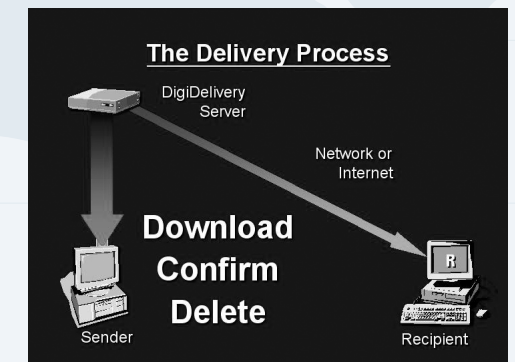
> 3 The sender can also enter a message for recipients and tracking information to help with automated billing.



> 4 DigiDelivery collects all required files, encrypts them for complete security, and posts the delivery to the DigiDelivery server. If the server is connected to the sender's network, the delivery is posted at up to 20 MB per second. As soon as the delivery is posted, an email is sent automatically to each of the recipients. Each email contains a unique encryption key that allows the recipient — and only that recipient — to download the delivery with a single click of the mouse. There's no need to enter IP addresses, usernames, or passwords, and no chance the recipient will get the wrong files.



> 5 As each recipient downloads the delivery, the files are decrypted securely on their desktop, and the sender receives a "confirmation of delivery" email, providing an electronic record of what was delivered to whom and when. Once all of the recipients have downloaded the delivery, the file is automatically deleted from the server, making manual disk management a thing of the past.



DigiDelivery was designed so that anyone can manage it. Simple web pages allow you to create accounts, edit email templates, and generate automatic reports for billing your clients — even from home. The Setup Wizard, one-click software updates, and built-in connectivity tests mean you don't need a degree in networking. If you can set up a regular computer for Internet access, you have all the skills needed to manage a DigiDelivery system.